



VAST 2

VMS for Small-to-Medium Scale Operations



Plug & Play Auto Setup · Thumbnail & Smart Search ·
2.5D Visualization eMap · Problem Feedback Mechanism

VIVOTEK's VAST 2 is an easy to use IP video management software (VMS) designed for medium-sized deployments. To meet users' real-world needs, it comes with exciting advancements such as easy operation on single or multiple monitors, custom layout to fit both in corridor and panorama format, rapid export of multi-channel video and acquiring VCA analytics with integrated cameras.

VAST 2 supports smart search and thumbnail search for advanced video search applications. Smart search provides users to easily set critical areas with a custom zone setting. Thumbnail search produces the snapshot preview to reduce

the chance of selecting the wrong image. Both ways allow for smarter and quicker searches of specific events. To efficiently solve users' problems and system bugs, VAST 2 provides an automatic problem feedback mechanism to directly connect to VIVOTEK's FAE system. Any feedback will be handled instantly.

With the automatic configuration wizards, VAST 2 can significantly reduce the time and cost of installing surveillance systems with multiple cameras. Furthermore, it also provides multi-layered, interactive 2.5D maps, and sophisticated alarm management. All features make VAST 2 a perfect VMS for shops, retail, banks, restaurants and more.

Key Features

- Custom Layout to Fit Different Camera Types
- Plug and Play Auto Setup
- Automatic Problem Feedback Mechanism
- Switch All Applications on Tabs
- Easy Support of Multiple Monitors
- 2.5D Visualization eMap
- Smart Search
- Thumbnail Search
- Evidence Lock
- Multi-Video Export with Custom Layouts
- 3rd Party Integration (POS)
- VCA Report

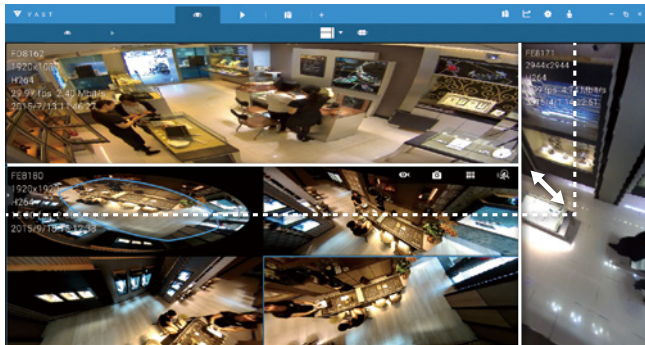
Support List

- VIVOTEK Network Camera: 8000 & 9000 Series
- VIVOTEK NVR: ND Series (ND8321 excluded)
- VIVOTEK Software: VAST 2

Highlight Features

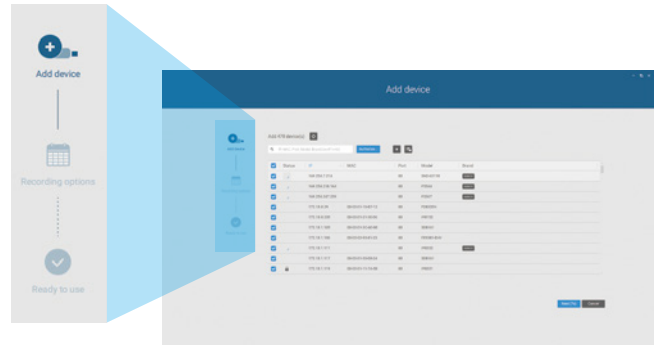
Intuitive UI Design

Direct intuitive custom layout adjustment and fisheye ROI control for better security management experience.



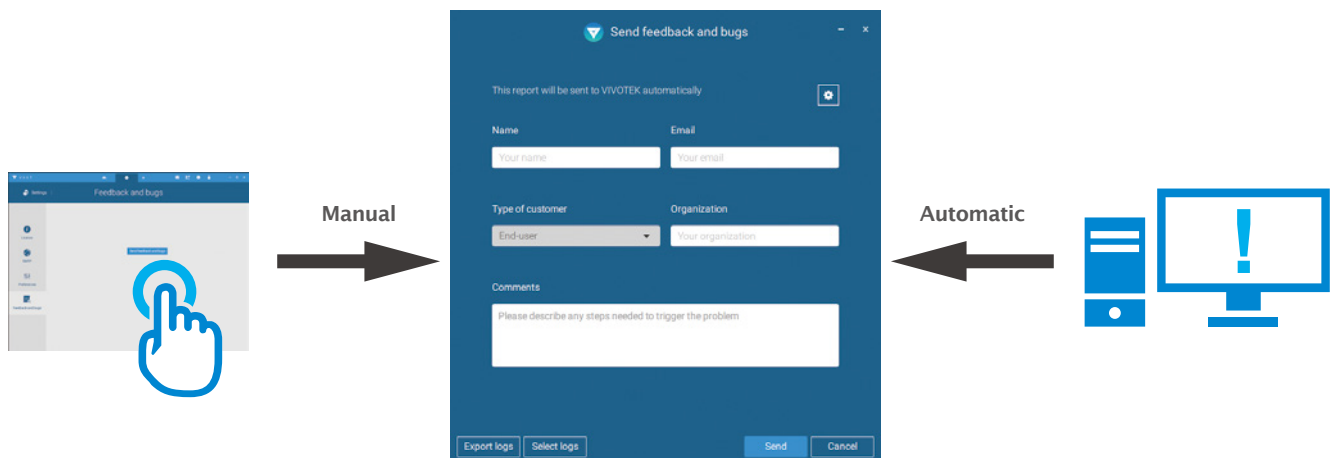
Auto Setup

Easy configuration through a fully automated process. Saves user's time and cost to install surveillance devices.



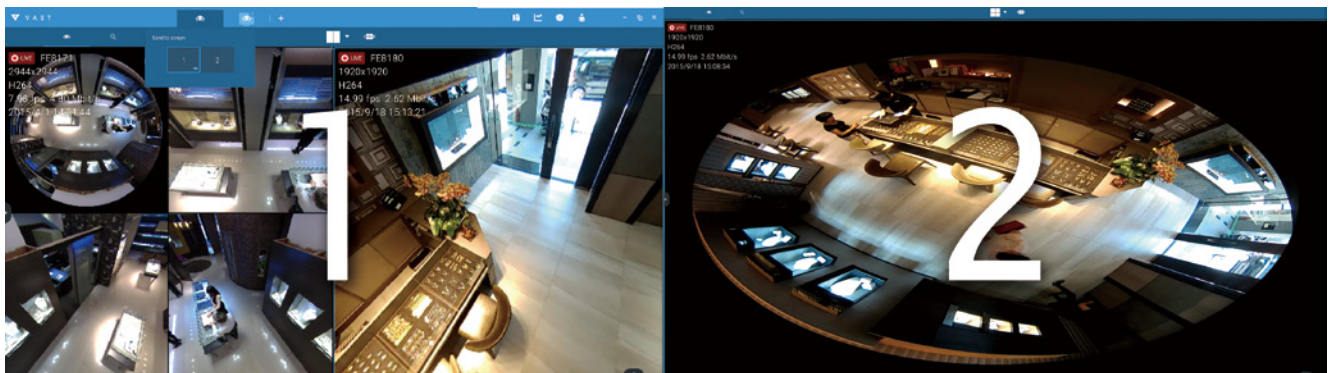
Problem Feedback Mechanism

Quick detect system problem and feedback to VIVOTEK's FAE system via automatic popup or manual operation.



Multi-Monitor & Tabs

Manage unlimited tasks with multiple screens for intuitive and easy surveillance.



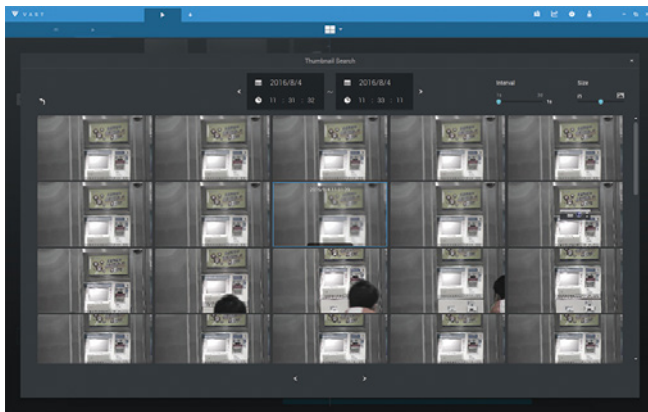
Screen 1

Screen 2

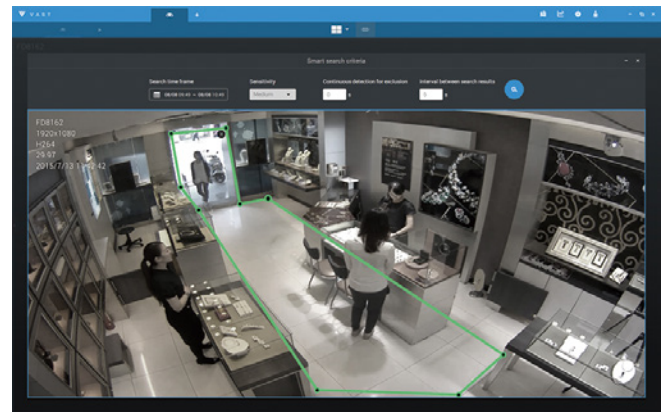
Highlight Features

Advanced Search

Efficiently search suspicious video and specific events with thumbnail view and smart search.



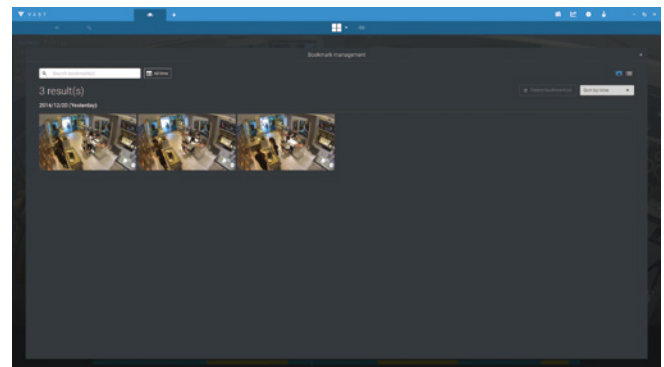
Thumbnail Search



Smart Search

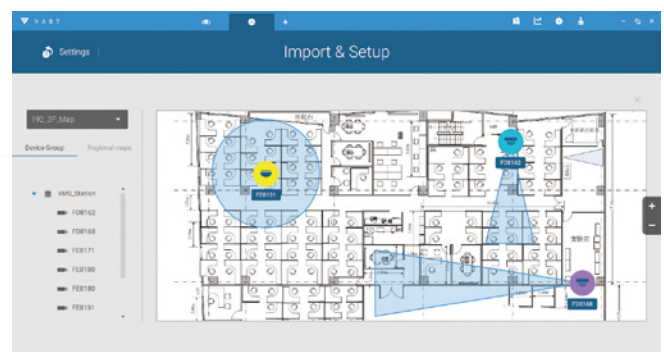
Evidence Lock

Manually extend the retention time for video recordings and manage a high number of investigation scenarios.



2.5D Visualization eMap

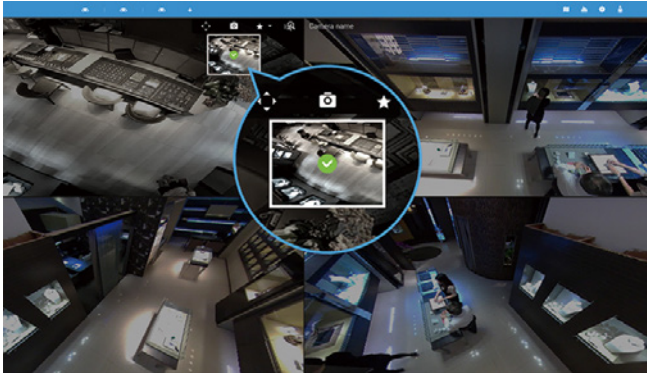
Multiple layers and camera's FOV views allow users instantly to pinpoint a selected camera located on the map.



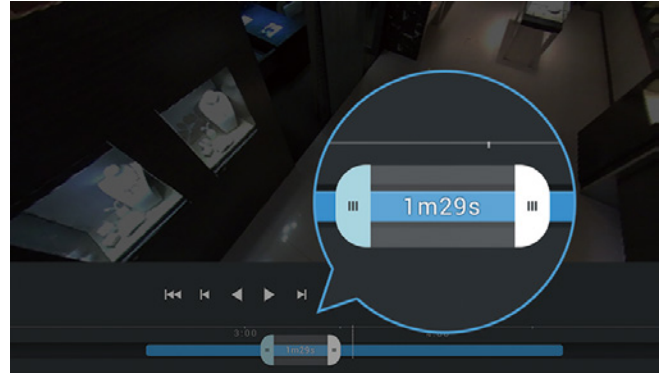
Highlight Features

Export Evidence

Easily export multiple video recordings with custom layouts in a specific time period or instant snapshot with a fast click.



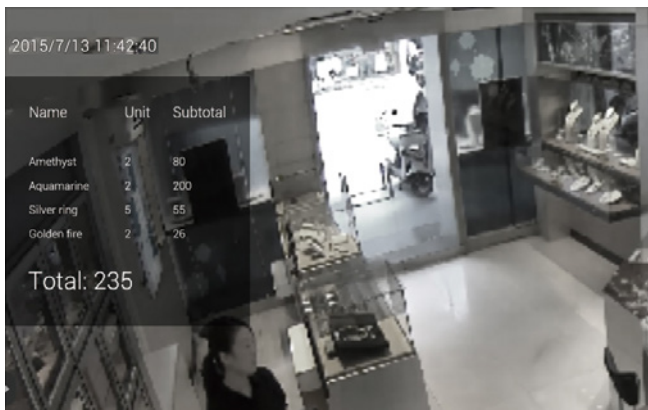
Snapshot



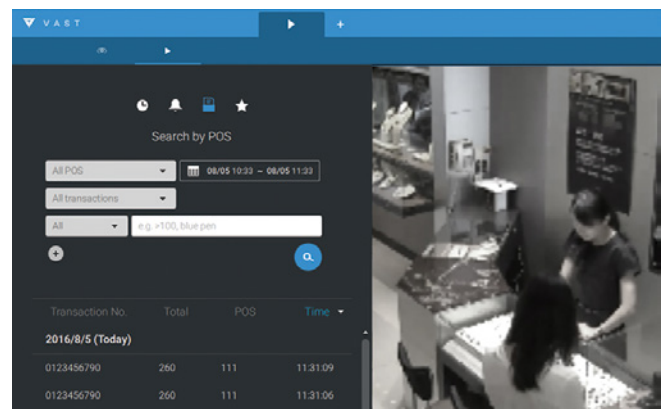
Video

3rd Party Integration

Incorporate IP cameras with POS systems to record POS real-time transactions and detailed searches.



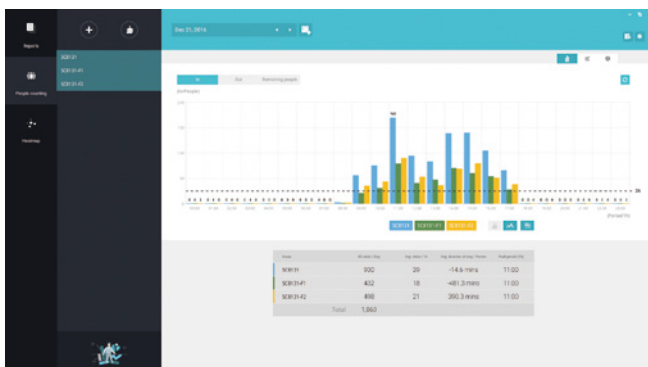
Monitor Transactions



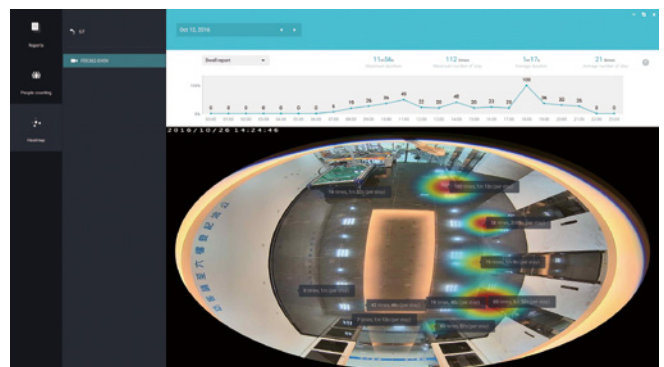
Search Transaction Details

VCA Report

Integrate VIVOTEK's intelligence cameras to provide visual reports including video feedback, tables and charts.



VCA Counting



VCA Heatmap

System Requirements

VAST 2 Server

Server (Recording Channels)	Up to 64-CH	Up to 128-CH	Up to 256-CH
CPU	4th Generation Intel® Core™ i3 Processors or above		4th Generation Intel® Core™ i5 Processors or above
RAM	4 GB or above	8 GB or above	8 GB or above
Hard Drive (Enterprise Model Only) Suggestion	1 Volume Group*	2 Volume Group*	4 Volume Group*
Recording Throughput	1 Volume Group: Max. 200 Mbps**		
Network Interface Card	1000/100/10 Ethernet***		

* Volume group depends on total recording server throughput.

** Maximum number bitrate of cameras not to go over total recording throughput.

*** Please consider the throughput of viewing, recording and server's network.

VAST 2 LiveView & Playback

Client (Display Channels)	H.264, 720P, 2Mbps for Each Channel*	8-CH	16-CH	32-CH
	H.264, 1080P, 4Mbps for Each Channel**	6-CH	10-CH	18-CH
	H.265, 1080P, 4Mbps for Each Channel	3-CH	5-CH	9-CH
CPU		4th Generation Intel® Core™ i3 Processors	4th Generation Intel® Core™ i5 Processors	4th Generation Intel® Core™ i7 Processors
RAM		4 GB or above	4 GB or above	4 GB or above
Graphics Processing Unit (GPU)***		Support Direct3D acceleration with 1GB Video RAM		
Network Interface Card		1000/100/10 Ethernet		

* Display requirements of a 3MP fisheye camera is equal to a 720P camera.

** Display requirements of a 5MP fisheye camera is equal to a 1080P camera.

*** Please update to the latest version of GPU driver.

If installing Server & Client in the same PC, overall loading of the PC will be evaluated.

Trial for 60 days

Technical Specifications

Version	2.0
General	
Auto Wizard	Plug & Play Auto Setup
Max. Number of Cameras*	Unlimited
Max. Number of Servers*	Unlimited
Max. Number of Clients	Unlimited
Support OS	Windows 10, 8, 7
Mobile Support	iViewer (iOS/Android)
Tabs Support*	Supported
Devices Pack	Ver. 5.9.68
LiveView (Local Display)	
Max. Channels*	64-channel per Monitor (Supports up to 8 Monitors)
Layout	Equal: 1x1, 2x2, 3x3, 4x4, 5x5, 6x6, 7x7, 8x8 Panorama: 1P+6, 2P, 2P+3, 3P Focus: 1+12, 1+16, 1+3, 1+5, 1+7, 1+9, 2+8 Vertical: 1V+6, 2V+2, 2V+3, 3V, 3V+4, 4V, 4V+4, 5V Single Layout Display
Custom Layout	Supported
Layout Configuration Saving	Supported
Layout Rotation	Supported
Stream Application	Stream Selection & Auto Stream Size
Application	Drag & Drop PiP (Digital Zoom) Instant Playback Metadata Display (VCA, POS)
Fisheye Dewarp Mode	10, 1P, 1R, 103R, 4R, 2P, 4R Pro, 108R
Playback	
Max. Channels*	64-channel per Monitor
Layout	Equal: 1x1, 2x2, 3x3, 4x4, 5x5, 6x6, 7x7, 8x8 Panorama: 1P+6, 2P, 2P+3, 3P Focus: 1+12, 1+16, 1+3, 1+5, 1+7, 1+9, 2+8 Vertical: 1V+6, 2V+2, 2V+3, 3V, 3V+4, 4V, 4V+4, 5V Single Layout Display
Custom Layout	Supported
Playback Mode	Asynchronous & Synchronous
Playback Control	Play, Rewind, Pause, Stop, Next/Previous Frame, 1/8X ~ 64X Speed Control, Bookmark
Playback Timeline	Scale Adjustment Event Timeline Interval Display
Search Mode	Calendar, Alarm, Bookmark, Thumbnail, Smart & Transaction (POS)
Evidence Lock	Supported

Video	
Video Format	MJPEG, MPEG4, H.264 AVC, H.264 SVC, H.265
Video Resolution	Up to 9 Megapixels
Audio	
Audio Format	G.711, G.726, AMR, AAC
Audio Capability	One-Way Audio
Record	
Recording Time (sec.)	Pre-Record: 10, Post-Record: 10 (Default)
Recording Stream Type	Unicast
Recording Stream	Single
Recording Mode	Continuous, Schedule, Event
Recording Setting	Recycle (Depends on Storage Size)
Recording File Format	3GP
External Storage Recording	NAS (SMB & CIFS)
Alarm Management	
Alarm Period (sec.)	Max. 30
Alarm Filter	Name, Time, Trigger Type (Camera/Substation/System)
Alarm Setting	Realtime System Notification
Schedule Type	Continuous, Schedule
Camera Source	Camera Disconnected, Camera DI, Camera DO, Field Detection (VCA), IR, Line Crossing (VCA), Loitering (VCA), Motion Detection, PIR, Recording Error, Stop Recording, Tampering Detection, Temperature, Video Loss (Video Server Only)
Substation Source	Network Disconnected, Storage Failure, Storage Full
Action	Start to record videos, Set DO Status, Go to camera presets, Send HTTP requests, Send live streaming, Send email
eMap	
Source	Import Picture & Folder
Adjustment	Vertical Angle Adjustment
Marked	Add, Remove, Direction Control, FOV Control & Indicator LiveView
PTZ	
PTZ Control	Mouse Draw & Drag Control
PTZ Operation	Direction Control, Home, Zoom, Focus, Preset, Patrol (Group), Tracking, Pan, Stop, Speed
PTZ Operation Mode	Continuous Move
Export	

Technical Specifications

Snapshot	PNG & JPEG
Export File	3GP & EXE
Player	
Layout	Single & Multiple Layout Display
Custom Layout	According to Playback Export Layout Configuration
Playback Mode	Asynchronous & Synchronous
Playback Control	Play, Rewind, Pause, Stop, Next/Previous Frame, 1/8X ~ 64X Speed Control
Playback Timeline	Scale Adjustment Event Timeline Interval Display
Snapshot	PNG & JPEG
Export Video	3GP
User Management	
Authentication	Basic Account
User Level	Administrator, Customized User
User Control	Permission (LiveView, Playback, Setting)
System	
Date & Time	Sync PC
Network	SMTP, HTTP & HTTPS
Language	Czech, English, French, German, Italian, Japanese, Persian, Portuguese, Russian, Spanish, Simplified Chinese, Traditional Chinese
Diagnostic Service	Yes

Device Integration	
VIVOTEK Network Camera	8000 & 9000 Series
VIVOTEK NVR	ND Series (ND8321 excluded)
VIVOTEK Software	VAST 2
I/O Box	Advantech ADAM-6000 Series
POS	POSNET
Camera Integration	
Camera Insert	Manual & Search
Basic Setting	User Name, Password & Camera Model Detection
ONVIF Core Spec	Version 2.2 or Above (By Project)
ONVIF Stream	Video (H.264, MPEG4 & MJPEG) & Audio (G.711, One Way)
ONVIF Control	PTZ Control (Up, Down, Left, Right & Zoom In/Out)
ONVIF Discovery	Supported
VCA Solution	
VCA for Surveillance	Line Crossing Detection, Loitering Detection, Field Detection
VCA for Business Intelligence	People Counting & Heatmap
Advanced Features	
VIVOTEK Exclusives	VCA Reports for Counting & Heatmap Standard VCA Integration (Line Crossing & Loitering & Field Detection)

* Please refer to System Requirements Page (<http://www.vivotek.com/vast2/#system>)